

HOLIDAY CITY AT BOCA RATON SECTION 5

A PLAT OF A PORTION OF SECTION 25 & 26, TWP. 47 SOUTH, RANGE 41 EAST
AND A REPLAT OF A PORTION OF BLK. 12, FLORIDA FRUIT LANDS CO. SUBDIVISION NO. 2 AS RECORDED IN
PLAT BOOK NO. 1, PAGE 102, PUBLIC RECORD OF PALM BEACH COUNTY, FLORIDA

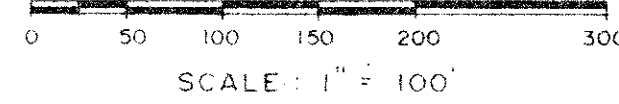
JOHN A. GRANT, JR., INC.

CONSULTING ENGINEERS AND LAND SURVEYORS

BOCA RATON, FLORIDA

SHEET 2 OF 2

MAY, 1977



HOLIDAY CITY AT BOCA RATON SECTION 4
PLAT BOOK 33, PAGES 9-10

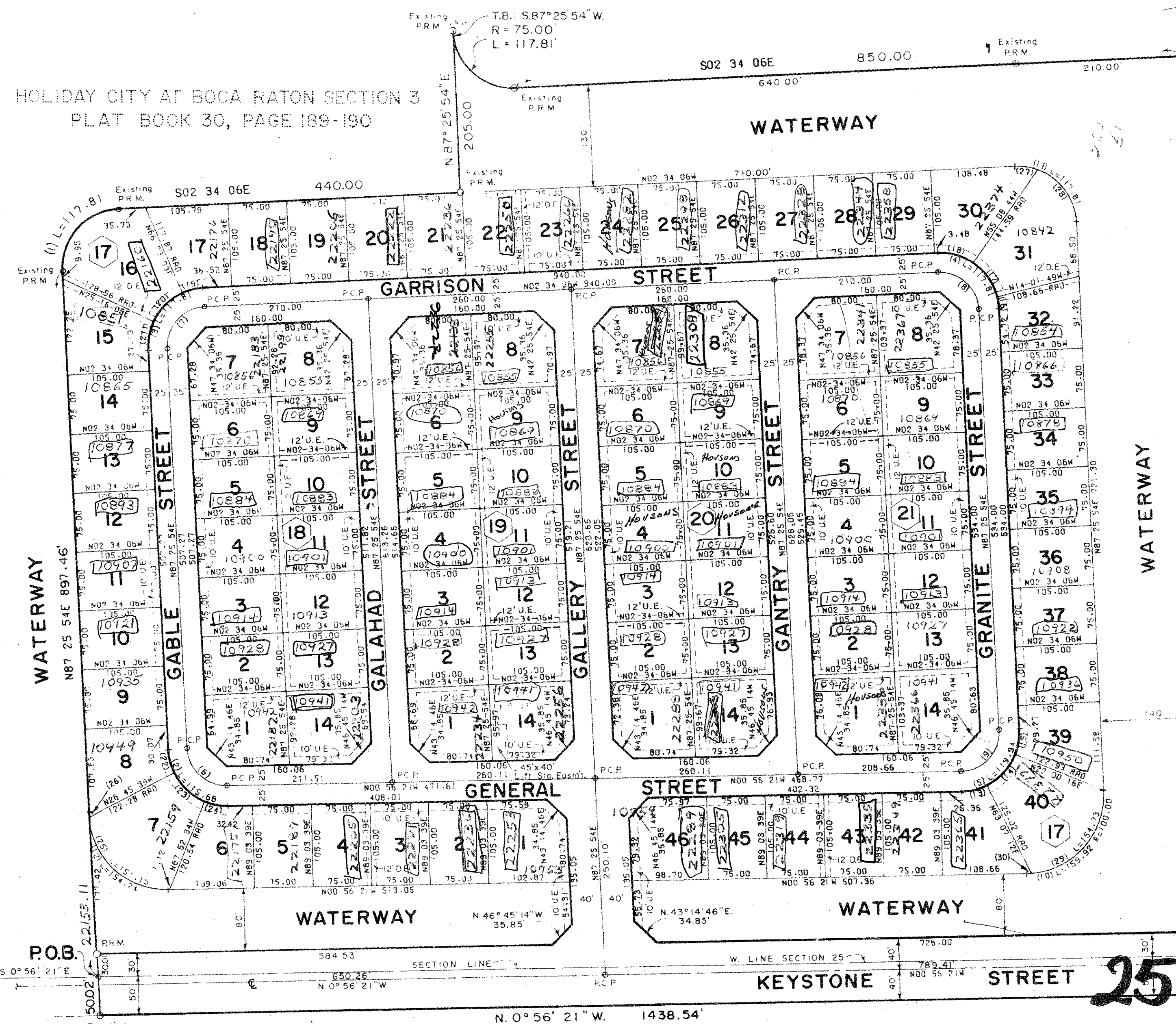
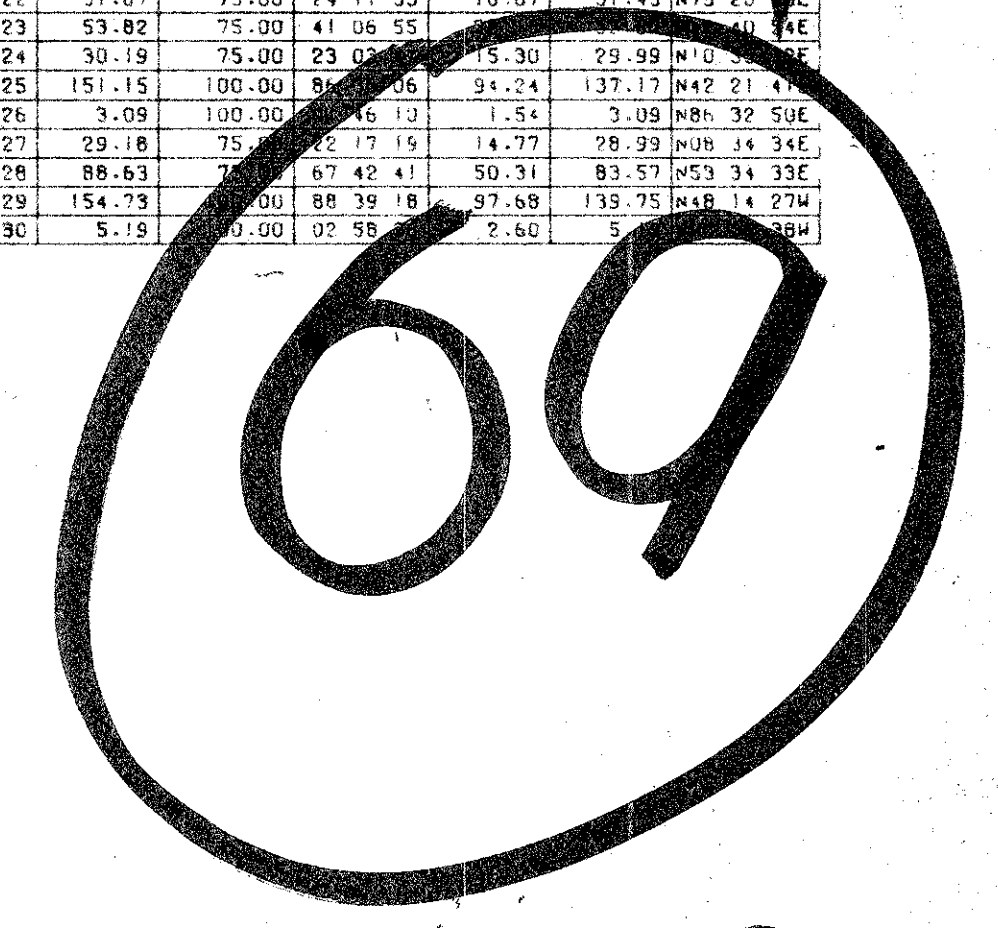


TABLE OF ARCS

NO.	ARC LENGTH	RADIUS	DELTA	LEN	L.C.H.	CH.BRG
1	117.81	75.00	90.00	75.00	105.07	N47 34 06W
2	115.68	75.00	88.22	72.90	104.55	N43 14 46E
3	117.81	75.00	90.00	75.00	106.07	N47 34 06W
4	117.81	75.00	90.00	75.00	106.07	N42 25 54E
5	119.84	75.00	91.37	77.16	107.56	N46 45 14W
6	77.12	50.00	88.22	48.80	65.70	N43 14 46E
7	78.54	50.00	90.00	50.00	70.37	N47 34 06W
8	78.54	50.00	90.00	50.00	70.37	N42 25 54E
9	79.96	50.00	91.37	51.44	71.71	N46 45 14W
10	159.92	100.00	91.37	102.88	143.42	N46 45 14W
11	117.81	75.00	90.00	75.00	106.07	N42 25 54E
12	154.24	100.00	88.22	97.20	139.40	N43 14 46E
13	33.96	75.00	25.56	17.27	33.67	N13 54 35W
14	53.82	75.00	41.06	28.13	52.67	N47 26 16W
15	32.16	75.00	24.34	16.33	31.92	N80 16 55W
16	15.00	75.00	11.27	7.53	14.98	N81 42 04E
17	53.82	75.00	41.06	28.13	52.67	S55 24 13E
18	48.99	75.00	37.25	25.40	48.12	N16 08 35E
19	27.55	75.00	21.02	13.93	27.40	N13 05 31W
20	53.82	75.00	41.06	28.13	52.67	N44 10 25W
21	36.44	75.00	27.50	18.59	36.08	N78 38 01E
22	31.67	75.00	24.11	16.07	31.43	N75 20 11E
23	53.82	75.00	41.06	28.13	52.67	N41 04 41E
24	30.19	75.00	23.00	15.30	29.99	N10 01 41E
25	151.15	100.00	88.22	94.24	137.17	N42 21 41E
26	3.09	100.00	0.86	1.54	3.08	N88 32 50E
27	29.18	75.00	22.77	14.77	28.99	N48 34 34E
28	88.63	75.00	67.42	50.31	83.57	S53 34 33E
29	154.75	100.00	88.38	97.65	135.75	N48 14 23W
30	5.18	100.00	0.75	1.40	5.17	N89 01 38W

FLORIDA FRUIT LANDS CO. SUBDIVISION NO. 2
PLAT BOOK 1, PAGE 102



NOTES

Bearings shown hereon are based on a bearing of N. 87° 25' 54" E. along the North line of Section 25, Township 47 South, Range 41 East as shown on the Plat of HOLIDAY CITY AT BOCA RATON SECTION 3, recorded in Plat Book 30, Pages 189-190 of the Public Records of Palm Beach County, Florida.

- P. R. M. Indicates Permanent Reference Monument
- P. C. P. Indicates Permanent Control Point
- U. E. Indicates Utility Easement
- D. E. Indicates Drainage Easement

There will be no buildings, trees, or shrubs placed on easements.

This instrument was prepared by:
John A. Grant, Jr., John A. Grant, Jr., Inc.
3333 North Federal Highway, Boca Raton, Fl.

FLORIDA FRUIT LANDS CO. SUBDIVISION NO. 2
PLAT BOOK 1, PAGE 102

HOLIDAY CITY AT BOCA RATON #5

25 & 26 / 47 / 41

0478-304 33

169